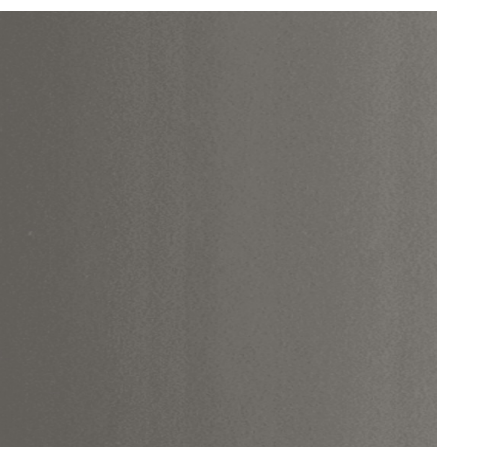


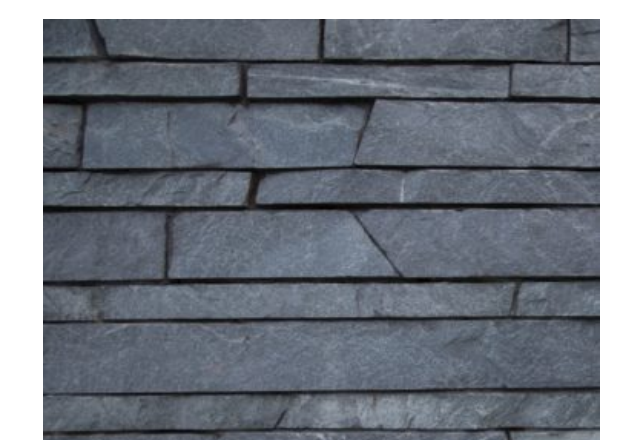
HandPanel Smooth "High Exposure" w/ Hidden reveal system



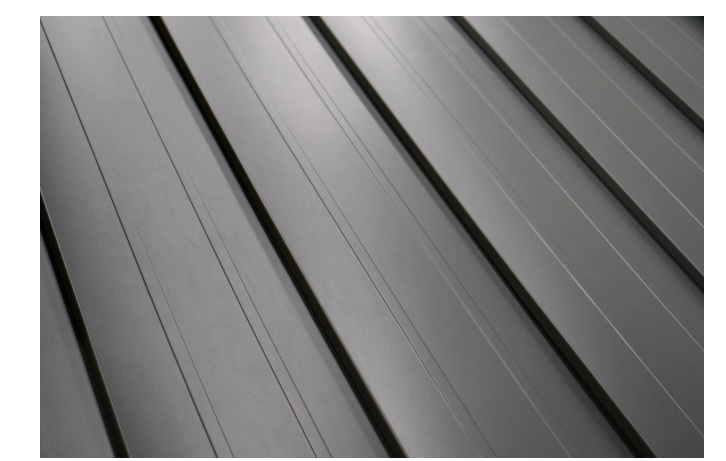
HandPanel Smooth "Light Finish" w/ Hidden reveal system



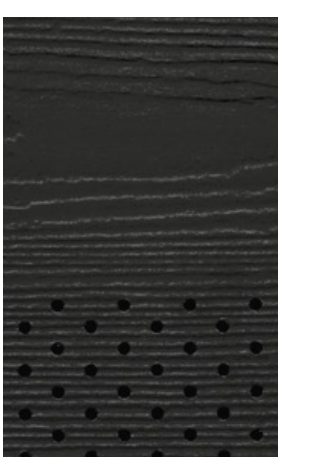
DARK WALNUT 1802/02-733
Longwood-Helm Sliding Lap-Siding "Dark Walnut"



K2 Stone "Pacific Ashlar"



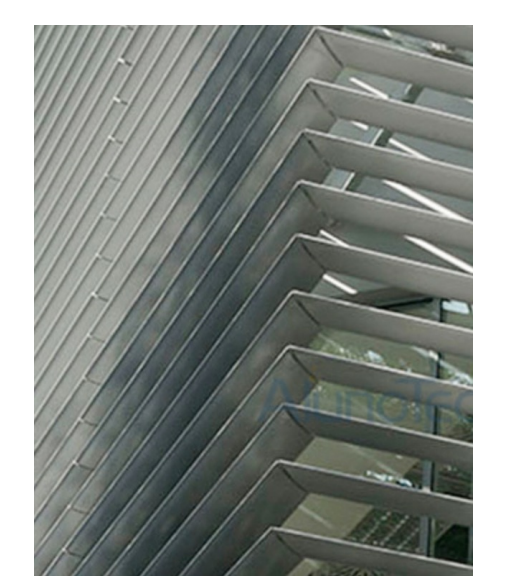
Hinterock "Blending Seam Metal Roof" Dark Gray



HandSoft Cedar Mill Venetis "Yon Gray"



Vista-Rendit Windows & Doors Dark Bronze



S&B Linear Louver Panels 604 Color: 8007 Gray Alum.



Arch Louver H6,JP Sunshade Louvers Kynar 500 "Black"



RECEIVED
DP 1124
2018-OCT-09
Current Planning & Subdivision

Design Firm
finn + associates design limited
755 Terminal Ave. N.
www.FinnAssoc.com

Plot Date 20180825	Project Manager KB	Sheet Title Elevations	Scale 1:100
Submitted By KB	Checked By KB	Project Title Ricky's Restaurant Facade Upgrade Island Hwy, Nanaimo, BC	Sheet No. A102
CAD File Name 1822 20180925.vwx	Drawn By RF		of 8
Project ID 1822	Date 18/09/25		